

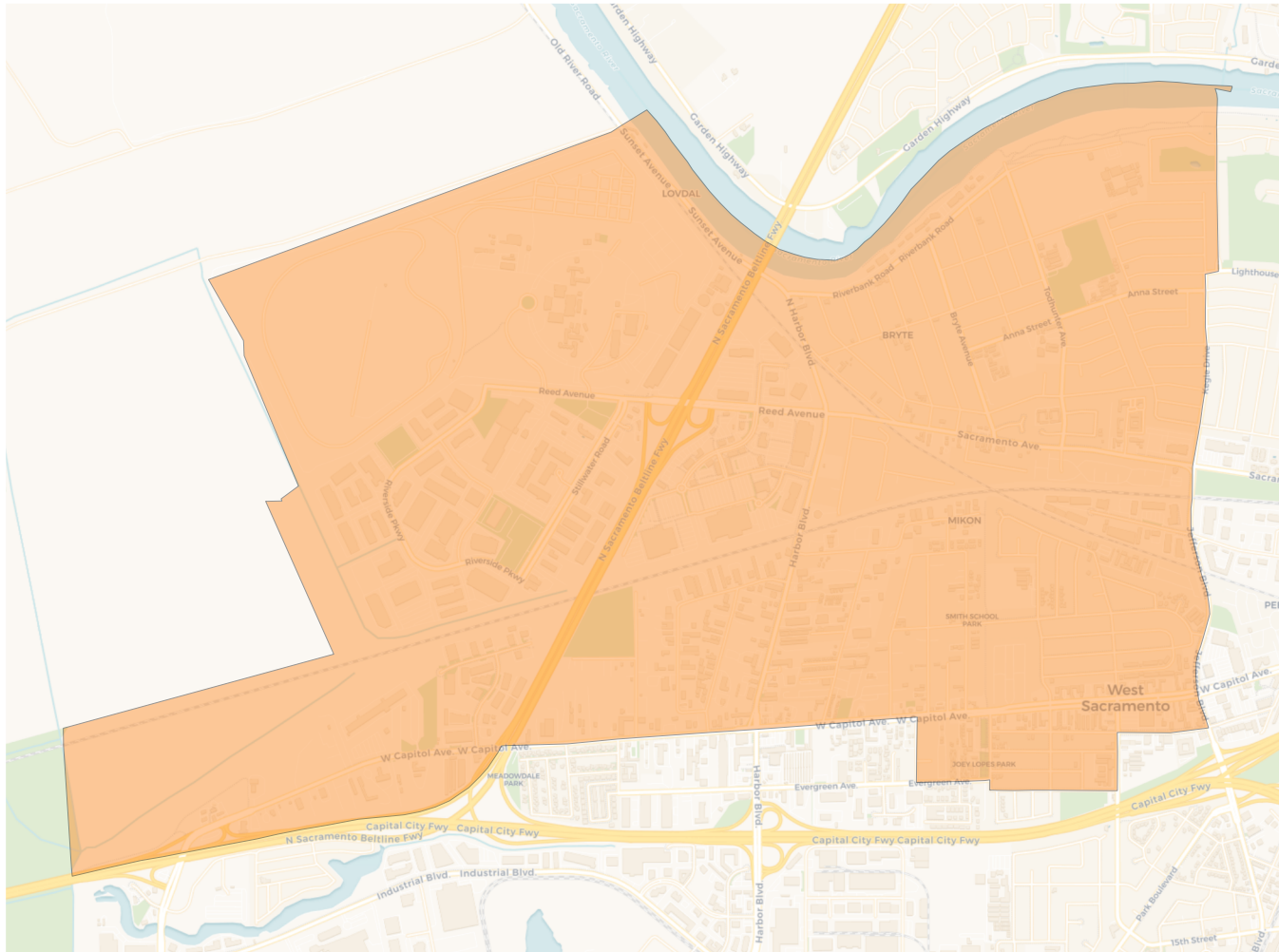
**2020 Census**

	1	2	3	4
Population	13,477	13,946	12,995	13,659
Deviation	-42	427	-524	140
Deviation %	-0.3%	3.2%	-3.9%	1.0%
Other	5,724	7,011	7,091	7,260
Other %	42.5%	50.3%	54.6%	53.2%
Latino	6,296	4,775	3,282	2,971
Latino %	46.7%	34.2%	25.3%	21.8%
Asian	1,003	1,415	1,929	2,797
Asian %	7.4%	10.1%	14.8%	20.5%
Black	454	745	693	631
Black %	3.4%	5.3%	5.3%	4.6%

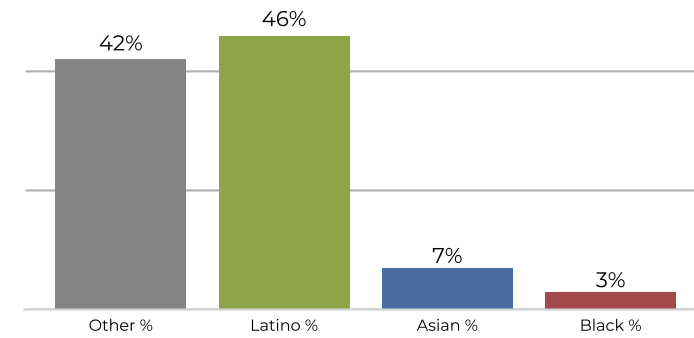
**Citizen Voting Age Population (CVAP)**

	1	2	3	4
Total CVAP	7,282	9,137	8,179	8,946
Other CVAP	3,748	5,708	5,694	5,499
Other CVAP %	51.5%	62.5%	69.6%	61.5%
Latino CVAP	2,259	2,337	1,314	1,235
Latino CVAP %	31.0%	25.6%	16.1%	13.8%
Asian CVAP	650	503	752	1,775
Asian CVAP %	8.9%	5.5%	9.2%	19.8%
Black CVAP	625	589	419	437
Black CVAP %	8.6%	6.4%	5.1%	4.9%

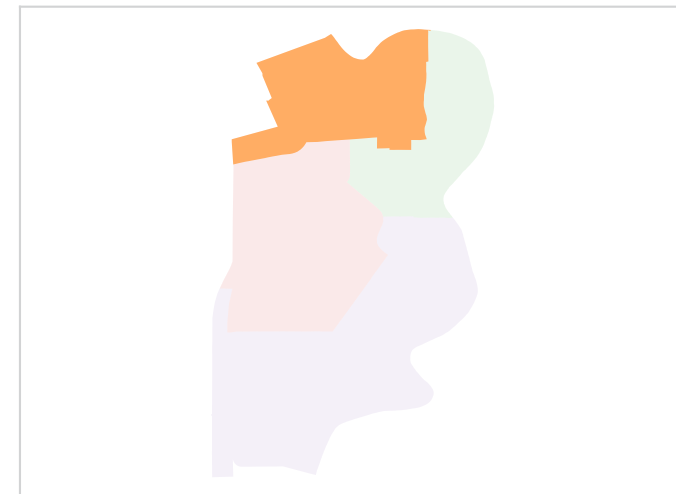
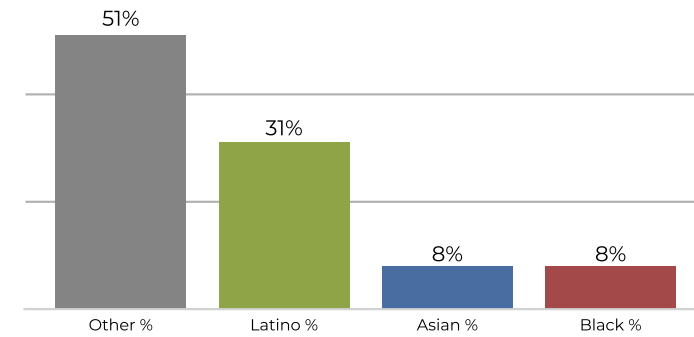
**District 1**



**2020 Census**



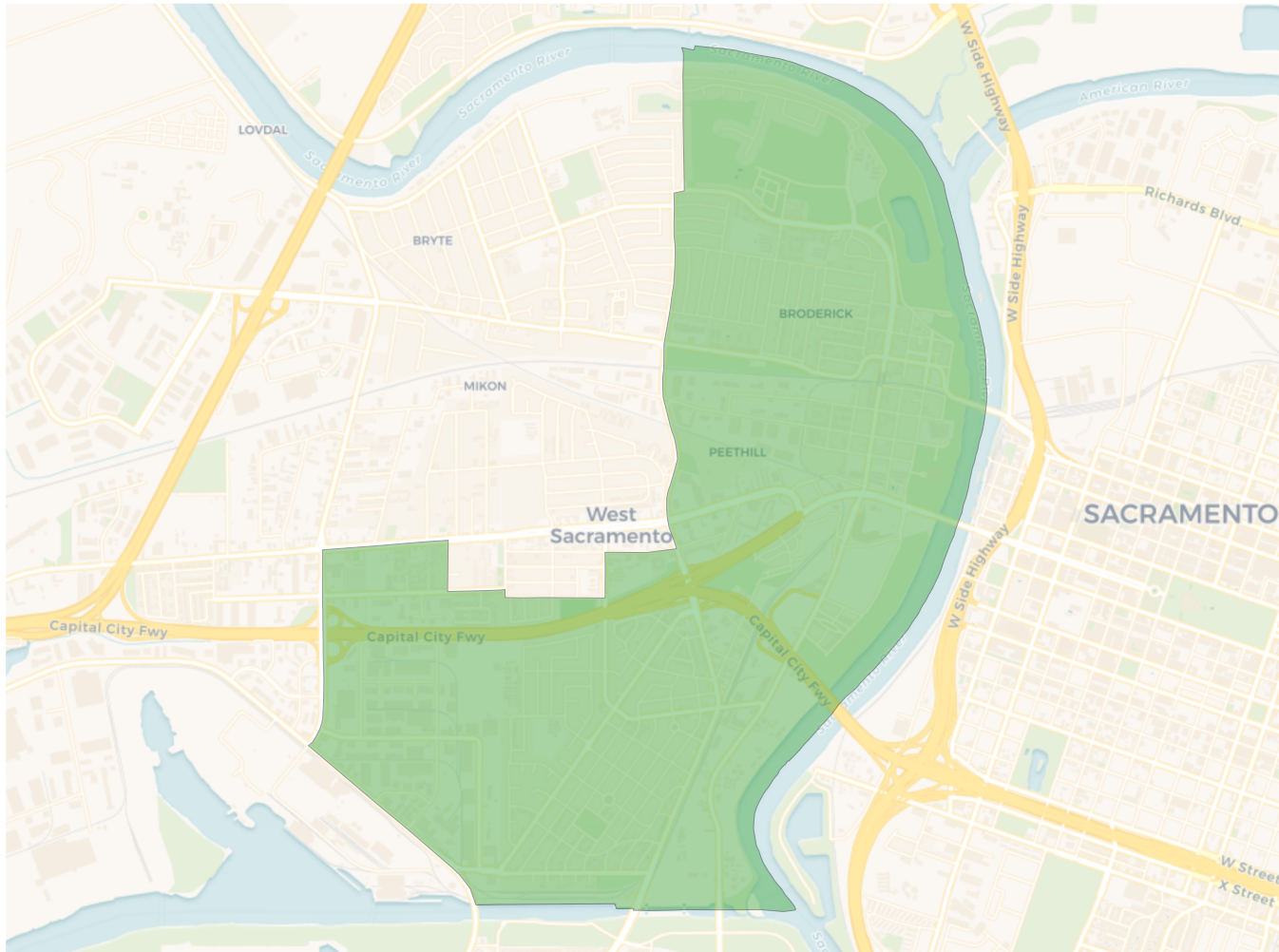
**Citizen Voting Age Population**



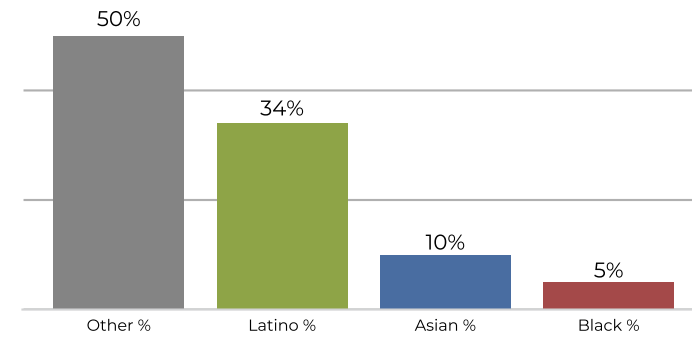
Population	Deviation	Deviation %	Other	Other %	Latino	Latino %	Asian	Asian %	Black	Black %
13,477	-42	-0.3%	5,724	42.5%	6,296	46.7%	1,003	7.4%	454	3.4%
<b>Total CVAP</b>	<b>Other CVAP</b>	<b>Other CVAP %</b>	<b>Latino CVAP</b>	<b>Latino CVAP %</b>	<b>Asian CVAP</b>	<b>Asian CVAP %</b>	<b>Black CVAP</b>	<b>Black CVAP %</b>		
7,282	3,748	51.5%	2,259	31.0%	650	8.9%	625	8.6%		



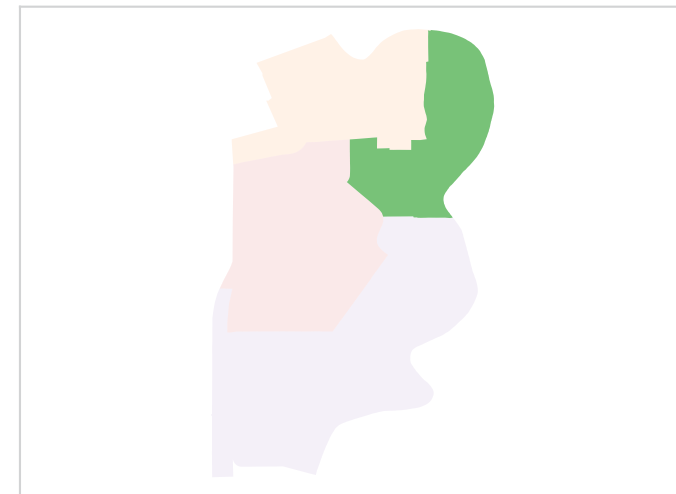
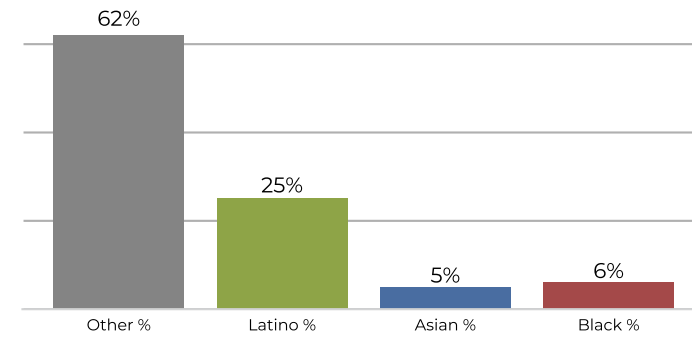
**District 2**



**2020 Census**



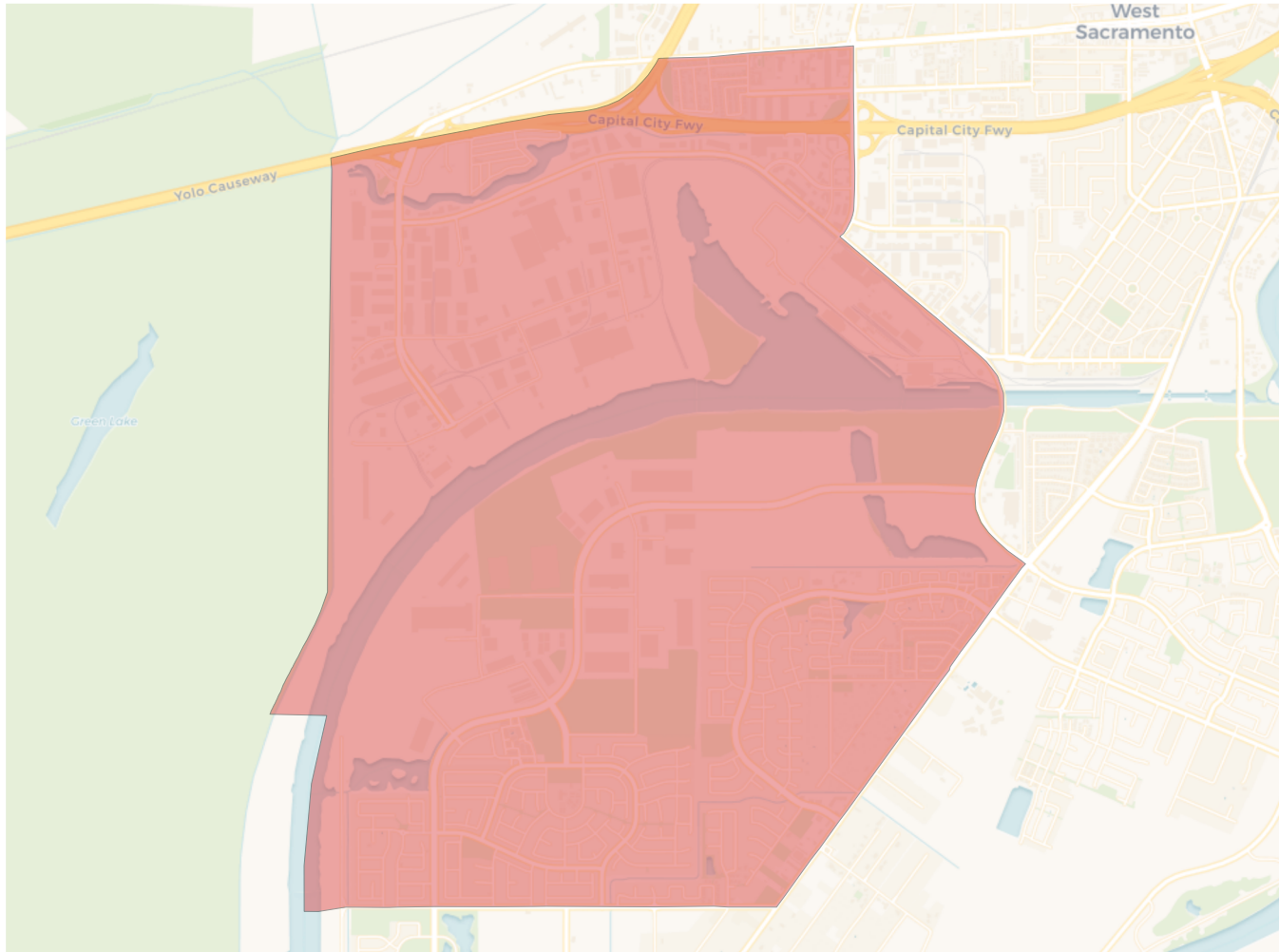
**Citizen Voting Age Population**



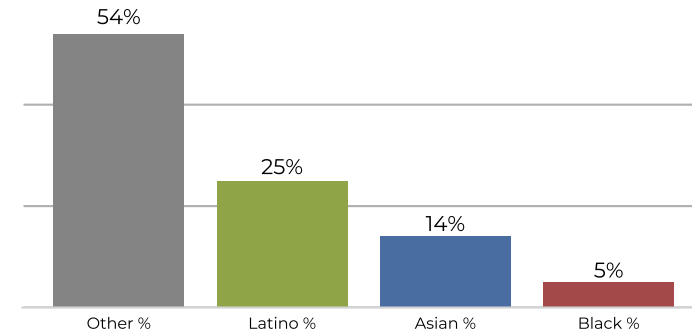
Population	Deviation	Deviation %	Other	Other %	Latino	Latino %	Asian	Asian %	Black	Black %
13,946	427	3.2%	7,011	50.3%	4,775	34.2%	1,415	10.1%	745	5.3%
Total CVAP	Other CVAP	Other CVAP %	Latino CVAP	Latino CVAP %	Asian CVAP	Asian CVAP %	Black CVAP	Black CVAP %		
9,137	5,708	62.5%	2,337	25.6%	503	5.5%	589	6.4%		



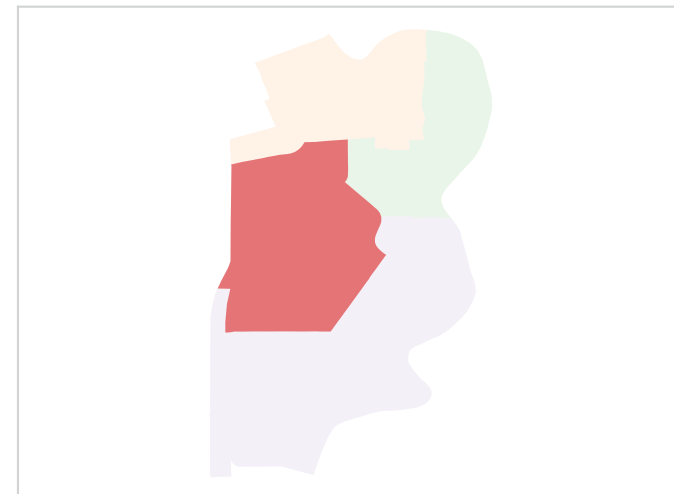
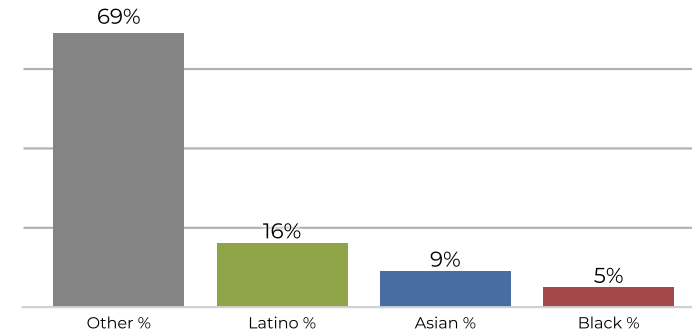
**District 3**



**2020 Census**

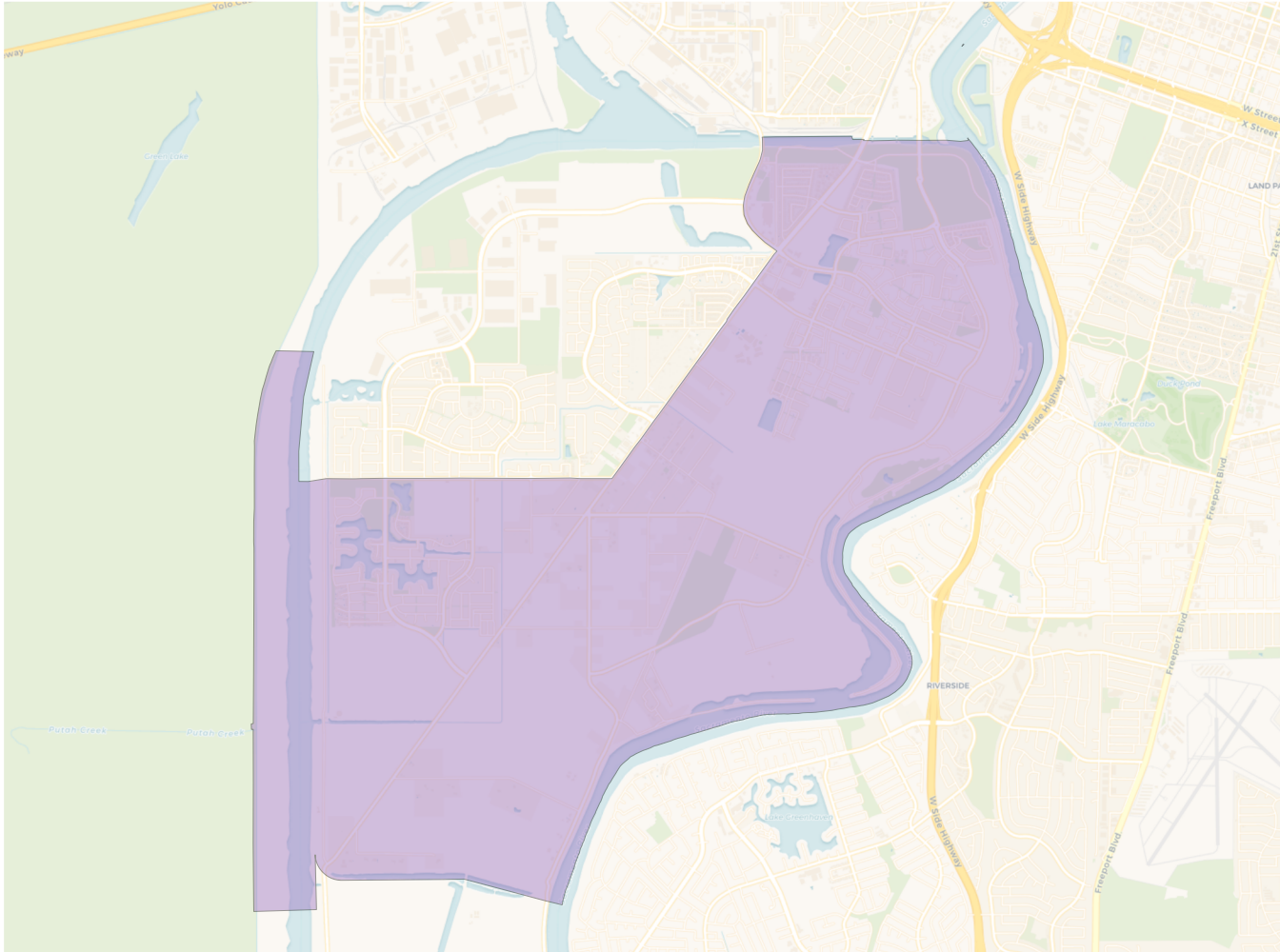


**Citizen Voting Age Population**

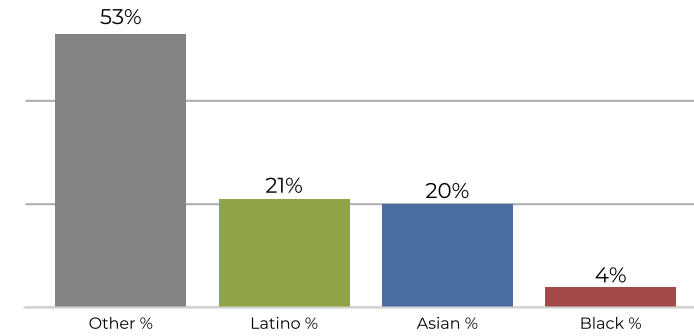


Population	Deviation	Deviation %	Other	Other %	Latino	Latino %	Asian	Asian %	Black	Black %
12,995	-524	-3.9%	7,091	54.6%	3,282	25.3%	1,929	14.8%	693	5.3%
Total CVAP	Other CVAP	Other CVAP %	Latino CVAP	Latino CVAP %	Asian CVAP	Asian CVAP %	Black CVAP	Black CVAP %		
8,179	5,694	69.6%	1,314	16.1%	752	9.2%	419	5.1%		

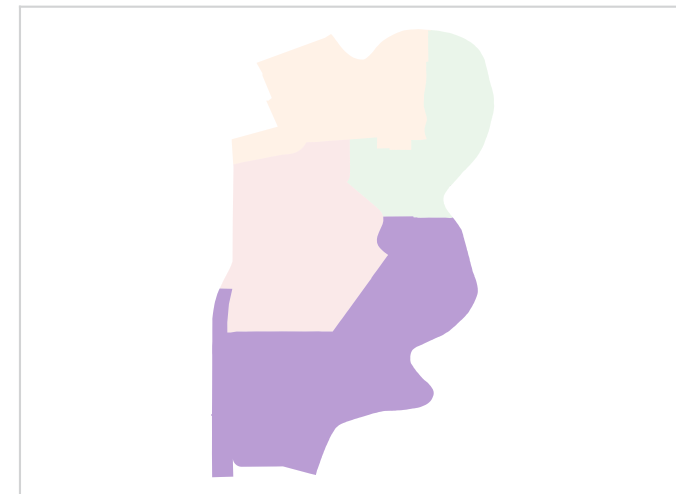
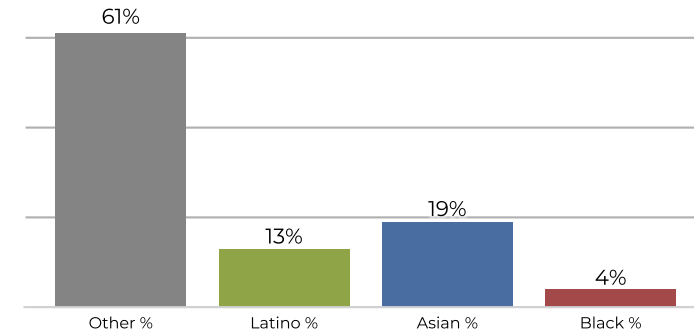
**District 4**



**2020 Census**



**Citizen Voting Age Population**



Population	Deviation	Deviation %	Other	Other %	Latino	Latino %	Asian	Asian %	Black	Black %
13,659	140	1.0%	7,260	53.2%	2,971	21.8%	2,797	20.5%	631	4.6%
Total CVAP	Other CVAP	Other CVAP %	Latino CVAP	Latino CVAP %	Asian CVAP	Asian CVAP %	Black CVAP	Black CVAP %		
8,946	5,499	61.5%	1,235	13.8%	1,775	19.8%	437	4.9%		